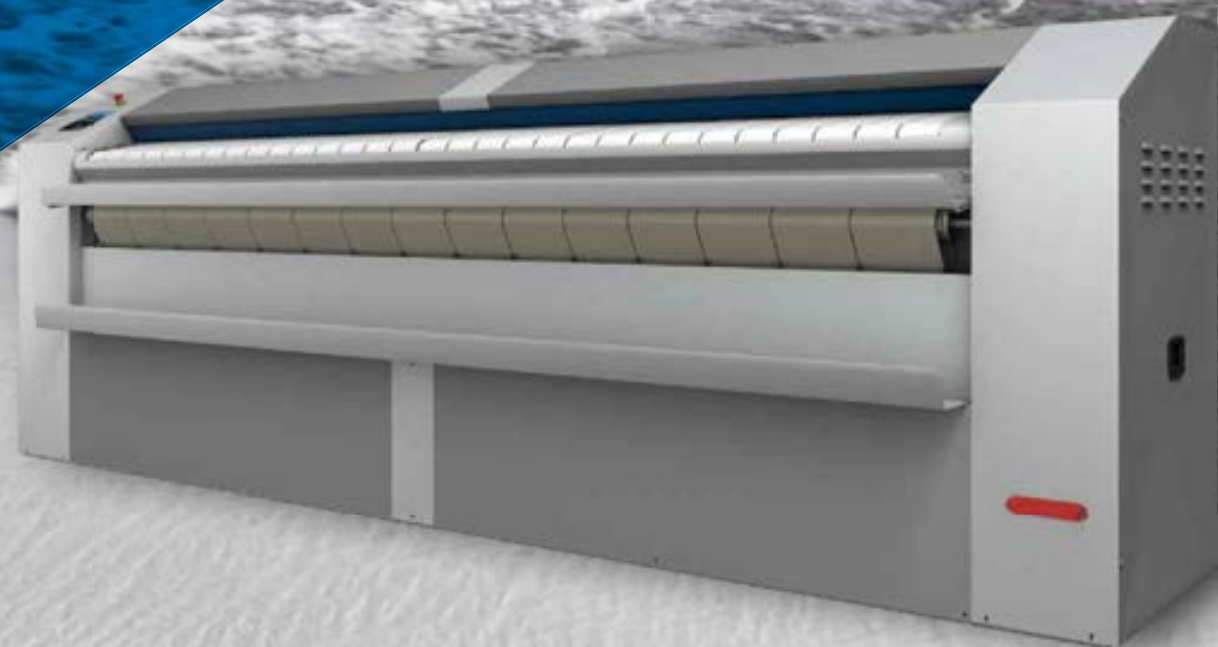


# FLATWORK DRYER IRONERS



Contacto:

SERVILAUNDRY S.A.S.

Office: Kra 44B No. 60-63 B. Boston

Barranquilla - Colombia

Phone - Whsaap: 3017769963 - 3012493904 - 3007516138

[www.servilaundry.com](http://www.servilaundry.com)

# FLATWORK DRYER IRONERS

## WHEN PERFECT IRONING IS A MUST

Danube International supplies a full range of cylinder heated long lasting flatwork dryer ironers. Simple or equipped with sophisticated devices, these machines are designed for high performance and energy savings.

Danube range of flatwork ironers are built to meet the needs of hotels, healthcare facilities, nursing homes and on premises laundries. Designed to improve the production efficiency of our customers and to reduce operating costs, they are recognized among the dryer ironers to be functional and safely easy to use. Innovative and compact, they save space and offer various options which make them adaptable to most of the requirements.

4 ranges are available: the smallest ones with roll ø 200 and 325 mm and working width from 1 m40 to 2 m according to models are controlled by electronic programmer, simple and easy to use, they perfectly meet the needs of small structures and combine speed and quality of ironing at the best price. Our biggest range come with roll ø 500 and 650 mm and are specially designed to meet the requirement of hotels, healthcare institutions or nursing homes where productivity and quality are undoubtedly linked. Besides they offer a wide range of features thanks to the new ET2 microprocessor and options to save time and energy such as automatic speed regulation, lengthwise folder, higher ironing speed...

FLATWORK IRONERS - Ø 200 mm				
CONTROL TYPE	HEATING	WORKING WIDTH		
		1,40 m		
Electronic control	Electric	MICRA II		

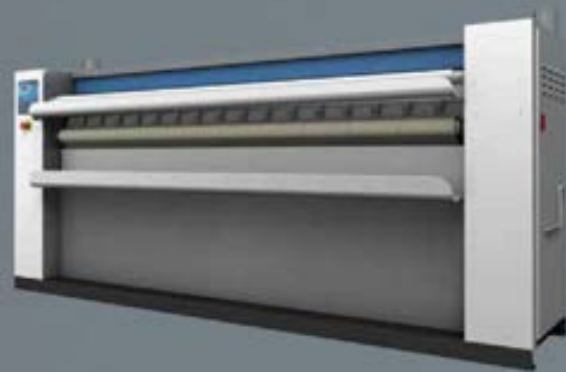
FLATWORK IRONERS - Ø 325 mm				
CONTROL TYPE	HEATING	WORKING WIDTH		
		1,40 m	1,60 m	2 m
Electronic control	Electric or gas	DII-14	DII-16	DII-20

FLATWORK IRONERS - Ø 500 mm				
CONTROL TYPE	HEATING	WORKING WIDTH		
		2 m	2,60 m	3,3 m
EASY TOUCH 2 Microprocessor	Electric, gas or steam	M20 ET2	M26 ET2	M33 ET2
ET2 microprocessor	With rear exit/ with lengthfolder	2 m	2,60 m	3,3 m

FLATWORK IRONERS - Ø 650 mm				
CONTROL TYPE	HEATING	WORKING WIDTH		
		2 m	2,60 m	3,3 m
EASY TOUCH 2 Microprocessor	Electric, gas or steam	G20 ET2	G26 ET2	G33 ET2
ET2 microprocessor	With rear exit/ with lengthfolder	2 m	2,60 m	3,3 m



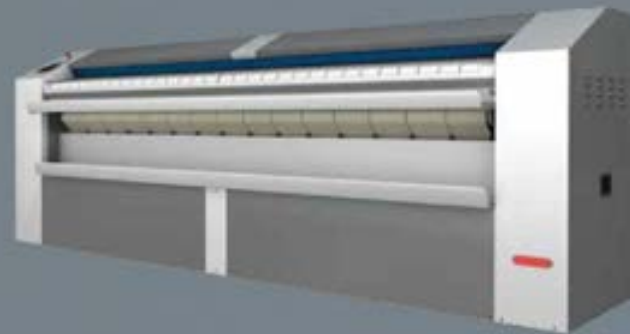
#### Small and middle range: DRYING IRONING



### Ø 200 / 325 mm FLATWORK IRONER

- ✓ Dries and irons flat linen directly from a high spin washer extractor in a single operation.
- ✓ Front feeding and return.
- ✓ Roll in polished steel.
- ✓ Motor with speed inverter.
- ✓ Built-in cool down system.
- ✓ User friendly and simple electronic control: selection of ironing speed and temperature.
- ✓ Feeding and ironing by Nomex belts.
- ✓ Ø 200 model only electric. Width 1,40 m.
- ✓ Ø 325 models electric and gas heating.
- ✓ Sizes 1,40 m / 1,60 m / 2 m.
- ✓ **OPTIONS ø 325 mm**
  - Humidity control with automatic ironing speed regulation.
  - Chrome plate roll.

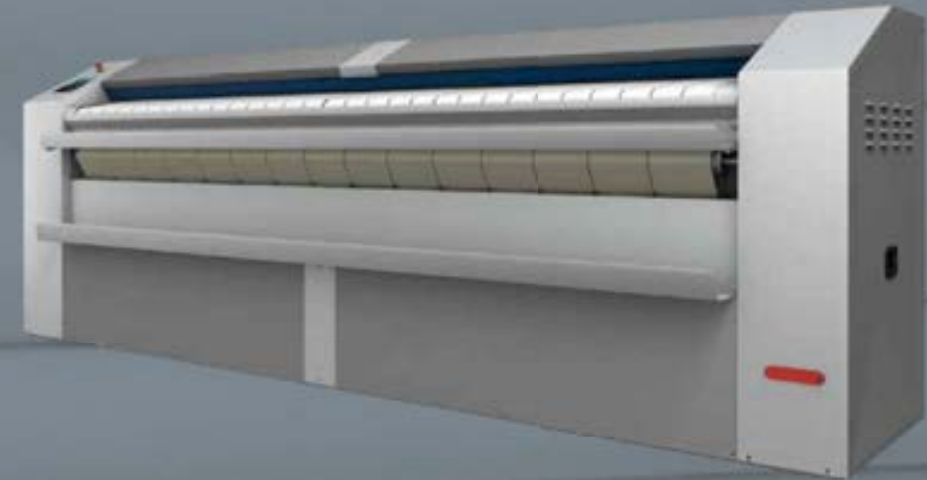
#### Productive range: DRYING IRONING FOLDING (opt)



### Ø 500 mm FLATWORK IRONER

- ✓ Dries and irons flat linen directly from a high spin washer extractor in a single operation.
- ✓ Front feeding and return.
- ✓ Electric, gas or steam heating. Gas radiant burner model available.
- ✓ Sizes: 2 m / 2,60 m / 3,30 m.
- ✓ ET2 microprocessor control with 7" coloured touch screen, fully programmable, 10 preset programs.
- ✓ Reversing roll as standard.
- ✓ Motor with speed inverter.
- ✓ Feeding and ironing by Nomex belts.
- ✓ Built-in cool down system.
- ✓ **OPTIONS**
  - **CARE IRON** Humidity control with automatic ironing speed regulation.
  - Chrome plate cylinder.
  - **HPS:** high productivity system with ironing speed until 15 m/mn and reduced speed for feeding help.
  - **Built-in lengthwise folder** with or without rear exit.

#### The most efficient range: DRYING - IRONING - FOLDING (opt.)



### Ø 650 MM FLATWORK IRONERS

- ✓ Dries and irons flat linen directly from a high spin washer extractor in a single operation.
- ✓ Front feeding and return.
- ✓ Electric, gas radiant or steam heating.
- ✓ Sizes: 2 m / 2,60 m / 3,30 m.
- ✓ ET2 microprocessor control with 7" coloured touch screen, fully programmable, 10 preset programs.
- ✓ Reversing roll as standard.
- ✓ Motor with speed inverter.
- ✓ Feeding and ironing by Nomex belts.
- ✓ Built-in cool down system.
- ✓ **CARE IRON** Humidity control with automatic ironing speed regulation **as standard.**
- ✓ **HPS:** high productivity system with ironing speed until 15 m/mn and reduced speed for feeding help **as standard.**
- ✓ **OPTIONS:**
  - Chrome plate cylinder
  - **Built-in lengthwise folder** with or without rear exit

# HIGH PERFORMANCE



## Easy Touch 2 (Ø 500 & 650 mm)

- User friendly and fully programmable **EASY TOUCH 2 with 7" touch screen**
- **USB Connection.** PC software free of charge for programming, traceability, data analyses...
- Remote communication ready
- **10 preset programs**
- 38 available languages.
- Reversing roll as standard.



## Efficiency

- **CARE IRON:** automatic regulation of ironing speed according to residual moisture, energy economizer (option on Ø 325 & 500 mm, standard on Ø 650 mm)
- **HPS system:** high production system with automatic adjustment of ironing speed, lowered by feeding and increased by ironing up to 15 m/mn for an optimized production (standard on Ø 650 mm, optional on Ø 500 mm)
- **Good heat conduction thanks to the material of the roll and its thickness:** greater control of the energy expenditure
- **Fumes circulation circuit** from the bottom reducing the energy consumption.
- **Automatic shutdown at 80°C:** increases the life time of ironing belts
- **Accurate temperature control thanks to the microprocessor:** lower energy consumption (except steam models).
- **Gas model with radiant burners:** better hourly output by 25 %, time and energy savings.



## Ergonomics

- **Acoustic comfort:** 65 dba max.
- **Skinplate and stainless steel panels:** (Ø 500 & 650 mm) easy to clean, better hygiene (RABC compliance)
- **Compact encumbrance**
- **Two user friendly available controls:**
  - EC Electronic control (Ø 200 & 325 mm) simple to operate with selection of ironing speed and temperature
  - ET2 microprocessor (Ø 500 & 650 mm) fully programmable
- **Motor with inverter providing a gradual acceleration**
- **Appropriate operating height :** 990 mm (Ø 200 & 325 mm), 1120 mm (Ø 500 & 650 mm)



## Easy Maintenance

- Easy access to all components on both sides of the machine
- No specific installation required: electricity and exhaust
- Easy installation: minimal encumbrance, same size for 500 and 650 mm models, space saving.
- Built-in lengthwise folder on Ø 500 and 650 mm: do not take more place than the single machine
- Remote communication: quicker intervention. Optional WiFi module



## Versatility

(Ø 500 & 650 mm models only)

- Gas radiant burner model: flexibility for a better production (25 % increase) or adaptation to high level places
- Built-in lengthwise folder with or without rear exit
- Possibility of adding an independant crossfolder and stacker.



## Robustness

- Roll driving by inverter: smooth operation preventing the wear of belts and mechanical elements
- Skinplate and stainless steel panels: long lasting
- NOMEX quality feeding and ironing belts: high temperature resistant
- (Ø 325, 500 & 650 mm): Chrome plate roll option: anticorrosive, more durable
- Chrome plate roll as option (Ø 325, 500 & 650 mm) : anticorrosive, more durable





# Easy Touch 2



## Touch Screen 7"

Coloured touch screen:  
7" screen (ø 500 & 650 mm models)  
Fully programmable: 10 preset programs,  
customization of programs according to each need.

## 38 languages

Available and easy to configure, thanks to  
DANUBE aim to be accessible to everyone.



## USB connection

PC software free of charge for programming,  
traceability, data analyses...



# Robustness

Our flatwork ironers have  
been designed to last and  
preserve main components  
as much as possible.

## Roll driving by inverter

Smooth operation preventing the wear of belts and  
mechanical elements.

## Nomex quality feeding and ironing belts

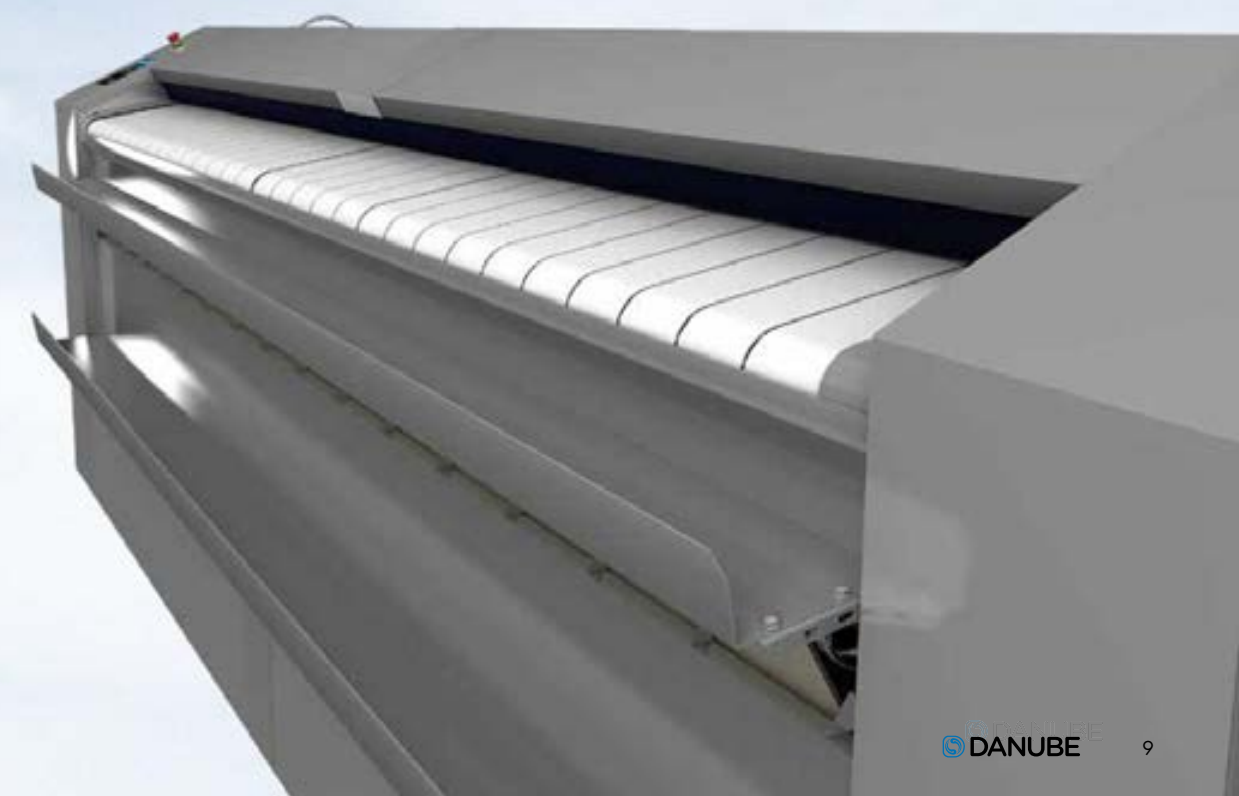
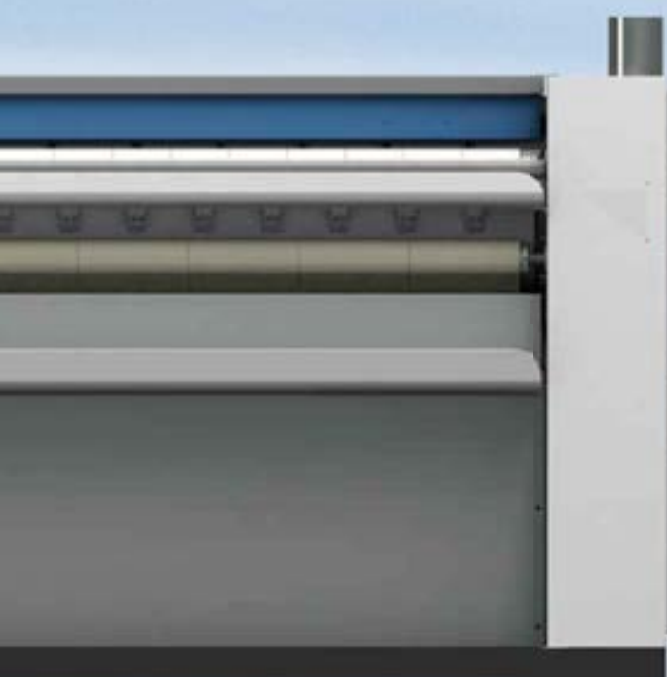
High temperature resistant.

## Skinplate and stainless steel panels

Long lasting and easy to clean.

## Chrome plate roll (opt.)

Anti-corrosive, more durable.



For laundries where quality of process and energy saving are a priority, our range of flatwork ironers offer a top performance to meet the needs of all kind of facilities.



## Care iron

Automatic regulation of ironing speed according to residual moisture, energy economizer (option on Ø 325 and 500 mm). Standard on Ø 650 mm

## Good heat conduction

Thanks to the material of the roll and its thickness: greater control of the energy expenditure

## HPS

High Production System: ironing speed until 15 m/min + feeding assistance by reducing speed when the sheet is introduced, optimized production (optional on ø 500 mm, standard on ø 650 mm)



## Automatic shutdown at 80 °C

Increases the life time of ironing belts

## Reducing the energy consumption

By fumes circulation circuit from the bottom

## Accurate temperature control (except steam models)

Thanks to the microprocessor: lower energy consumption



## Gas radiant burner heated model

Hourly output is increased by 25 %: time and energy savings





## Versatility

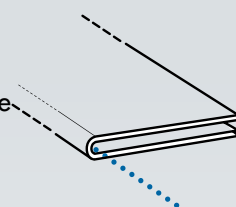
Our ø 500 & 650 mm flatwork ironers have been designed to be equipped with several options in order to meet all kind of requirements.

### Rear Exit (with folder)

As option with the built-in lengthwise folder, making easier handling operations.

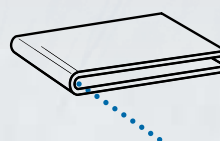
### Integrated lengthwise folder as option

Do not take more place than the single ironer, same encumbrance for ø 500 & 650 models.



### Cross folder

Possibility of adding a external cross folder and stacker to increase productivity (only with model equipped with folder + rear exit).



### Gas radiant burner

Flexibility for a better production or adaptation to high level places with less oxygen.

## Ergonomics

As health and safety at work had become an important issue, our equipment is designed to be the most comfortable for users.

### Acoustic comfort

65 dba max.

### Skinplate and stainless steel panels

Easy to clean, better hygiene: RABC compliance

### Motor with inverter

Providing a gradual acceleration, soft use.

### Minimal encumbrance

Save space, fits in most of areas.

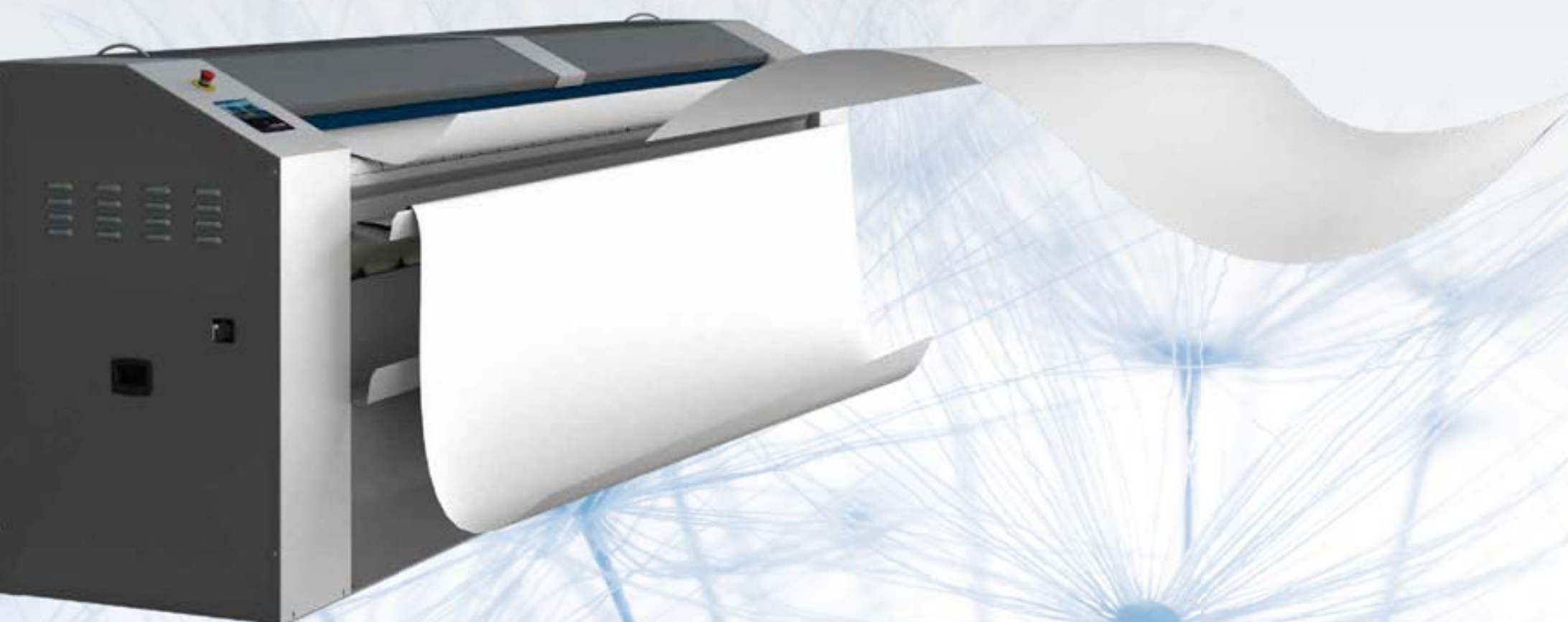
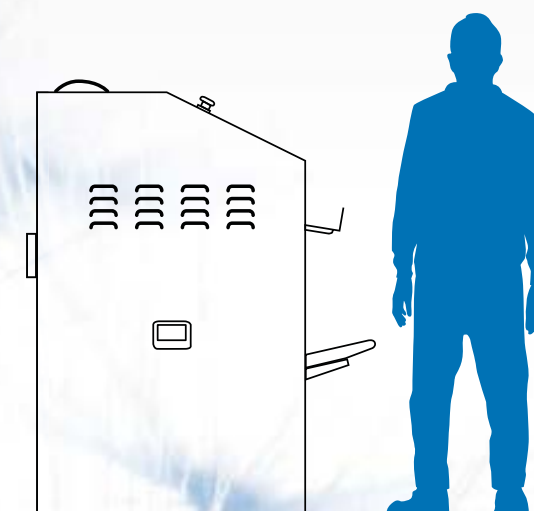
### User friendly controls

EC electronic control (ø 200 & 325 mm): selection of speed and temperature.

ET2 microprocessor (ø 500 & 650 mm): fully programmable.

### Appropriate operating height

990 mm (ø 200 & 325)  
1120 mm (ø 500 & 650)



# Easy Maintenance

One of DANUBE concerns is to make life easier for our clients. That includes offering quality equipment and parts of reputed brands, which demand little maintenance.

One electrical connection and exhaust required

Easy access to all components

On both sides of the machine

Technical menu with Easy Touch 2



Minimal encumbrance

Fits in most of areas

Remote communication with ET2

Quicker intervention, WIFI module

## TECHNICAL DATA

		UNIT.	MICRAII	DII-14	DII-16	DII-20	M-20 ET2	M-26 ET2	M-33 ET2	G-20 ET2	G-26 ET2	G-33 ET2
GENERAL DATA												
Theoretical production 45% humidity		Kg/h	12-14	10-20	20-30	30-40	50-70	60-80	80-120	65-90	80-104	104-160
Roll Ø		mm	200	325	325	325	500	500	500	650	650	650
Working width		mm	1400	1400	1600	2000	2000	2600	3300	2000	2600	3300
Height floor-feeding belts		mm	990	990	990	990	1120	1120	1120	1120	1120	1120
Ironing speed		mt/min	1-5	1-6,5	1-6,5	1-6,5	1,5-8	1,5-8	1,5-8	1,5-15	1,5-15	1,5-15
Control			EC	EC	EC	EC	ET2	ET2	ET2	ET2	ET2	ET2
No. Programs		N°	7	7	7	7	10	10	10	10	10	10
Lengthwise folder (opt)		N°	No	No	No	No	Yes	Yes	Yes	Yes	Yes	Yes
POWER												
Electric	Heating power	Kw	10,5	12	16,2	21	31,5	40,5	54	42	54	72
	Total electric power	Kw	10,84	12,37	16,57	21,49	32,12	41,37	54,87	41,55	55,05	73,05
Gas	Heating power	Kw	—	14	22,5	30	40	55	69	52	69	78
	Total electric power	Kw	—	0,37	0,37	0,49	0,87	0,87	0,87	1,05	1,05	1,05
Steam	Heating power	Kw	—	—	—	—	50	64	81	50	64	81
	Total electric power	Kw	—	—	—	—	0,62	0,87	0,87	1,05	1,05	1,05
Roll motor power		Kw	0,25	0,25	0,25	0,25	0,37	0,37	0,37	0,55	0,55	0,55
Fan motor power		Kw	0,09	0,12	0,12	0,12 x 2	0,25 (x 2 if gas)	0,25 x2	0,25 x 2	0,25 x 2	0,25 x2	0,25 x 2
Additional electric power with folder option		Kw	—	—	—	0,56	0,56	0,56	0,56	0,56	0,56	0,56
Additional electric power with folder & rear exit option		Kw	—	—	—	0,74	0,74	0,74	0,74	0,74	0,74	0,74
CONNECTIONS												
Ø Gas inlet		BSP	—	1/2"	1/2"	1/2"	1"	1"	1"	1"	1"	1"
Ø Steam inlet		BSP	—	—	—	—	3/4"	3/4"	3/4"	3/4"	3/4"	3/4"
Ø Condensed (Steam models)		BSP	—	—	—	—	1/2"	1/2"	1/2"	1/2"	1/2"	1/2"
DIMENSIONS												
Width		mm	1878	1960	2210	2560	2820	3430	4130	2820	3430	4130
Depth (without trays)		mm	444	644	644	644	1070	1070	1070	1070	1070	1070
Height		mm	1335	1107	1107	1107	1420	1420	1420	1420	1420	1420
Weight		Kg	180	300	355	405	930	1180	1430	1189	1517	1765
SHIPPING DIMENSIONS												
Width		mm	2130	2340	2340	2780	3075	3685	4385	3075	3685	4385
Depth		mm	770	770	770	770	1170	1170	1170	1170	1170	1170
Height		mm	1570	1400	1400	1400	1675	1675	1675	1675	1675	1675
Weight		Kg	220	335	375	428	960	1220	1480	1219	1557	1815
Volume		m3	2,57	2,52	2,52	3,00	6,03	7,22	8,59	6,03	7,22	8,59
OTHERS												
No. Fume outlet		N°	1	1	1	2	1 (2 gas)	2	2	2	2	2
Ø Fume outlet		mm	83	98	98	98	153	153	153	153	153	153
Air flow		m3/h	300	500	500	1000	600 (1200 gas)	1200	1200	1200	1200	1200
Noise Level		dB	55	60	60	63	65	65	65	65	65	65
Capacity of evaporation		l/h	8 - 10	7 - 14	14 - 21	21 - 28	35 - 49	42 - 56	56 - 84	45-63	55 - 73	73 - 110

\*DANUBE reserves the right to modify the technical data without notice.



# FLATWORK DRYER IRONERS

DANUBE International  
Parc d'Activités de Sologne - CS 10026  
41600 Lamotte-Beuvron - FRANCE  
Tél.: +33 (0)2 54 88 05 76  
Fax: +33 (0)2 54 96 89 04  
Hotline: +33 (0)2 54 88 83 22  
support@danube.fr  
SAV: +33 (0)2 54 88 83 65  
Logistique commandes:  
+33 (0)2 54 88 05 76  
info@danube-international.com

[www.danube-international.com](http://www.danube-international.com)  
[www.danube.fr](http://www.danube.fr)

 **DANUBE**

ONNERA GROUP

